

# ROADIAN CT8



inch	Speed Symbol & Load Index	Code	Ply	Max. Psi	Max. Load				Rim		Section Width		Overall Diameter		Tread Depth		SLSR	S/W	E Mark	Mud + Snow	OE	
					lbs		kgs		Measuring	Approved	mm	inch	mm	inch	mm	/32"						
					S	D	S	D														
16 inch	225/60R16C	105/103T	13812	6	54	2,039	1,929	925	875	6.5	6.5-7.5	228	9.0	676	26.6	8.7	11.0/32	308	BS	E		
	215/60R16C	103/101T	13797	6	54	1,929	1,819	875	825	6.5	6.0-7.0	221	8.7	664	26.1	8.7	11.0/32	304	BS	E		
	215/60R16C	108/106T	13798	8	69	2,205	2,094	1,000	950	6.5	6.0-7.0	221	8.7	664	26.1	8.7	11.0/32	304	BS	E		
	195/60R16C	99/97H	13792	6	54	1,709	1,609	775	730	6.0	5.5-6.5	201	7.9	640	25.2	8.7	11.0/32	294	BS	E		
	235/65R16C	115/113R	13802	8	69	2,679	2,535	1,215	1,150	7.0	6.5-7.5	240	9.4	712	28.0	8.7	11.0/32	322	BS	E		
	215/65R16C	109/107T	13799	8	69	2,271	2,149	1,030	975	6.5	6.0-7.0	221	8.7	686	27.0	8.7	11.0/32	312	BS	E		
	205/65R16C	107/105T	13794	8	69	2,149	2,039	975	925	6.0	5.5-6.5	209	8.2	672	26.5	8.7	11.0/32	307	BS	E		
	195/65R16C	104/102R	13793	8	69	1,984	1,874	900	850	6.0	5.5-6.0	201	7.9	660	26.0	8.7	11.0/32	302	BS	E		
	225/75R16C	121/120S	13801	10	83	3,197	3,086	1,450	1,400	6.0	6.0-7.0	223	8.8	744	29.3	9.5	12.0/32	335	BS	E		
	LT225/75R16	115/112R	13427	10	80	2,680	2,470	1,215	1,120	6.0	6.0-7.0	223	8.8	744	29.3	11.6	15.0/32	335	BS	E	M+S	RAM PROMASTER
	215/75R16C	116/114R	13800	10	76	2,756	2,601	1,250	1,180	6.0	5.5-7.0	216	8.5	728	28.7	9.1	11.5/32	329	BS	E		
	205/75R16C	113/111R	13795	10	76	2,535	2,403	1,150	1,090	5.5	5.5-6.5	203	8.0	714	28.1	9.1	11.5/32	323	BS	E		
	195/75R16C	110/108T	13783	8	76	2,337	2,205	1,060	1,000	5.5	5.0-6.0	196	7.7	698	27.5	9.5	12.0/32	317	BS	E		
185/75R16C	104/102T	13791	8	69	1,984	1,874	900	850	5.0	5.0-6.0	184	7.2	684	26.9	8.7	11.0/32	311	BS	E			
175/75R16C	101/99R	13790	8	69	1,819	1,709	825	775	5.0	4.5-5.5	177	7.0	668	26.3	8.7	11.0/32	305	BS	E			
205R16C	110/108T	13796	8	65	2,337	2,205	1,060	1,000	5.5	5.5-6.5	208	8.2	736	29.0	9.1	11.5/32	332	BS	E			
15 inch	205/65R15C	102/100S	13811	6	54	1,874	1,764	850	800	6.0	5.5-6.5	209	8.2	647	25.5	8.7	11.0/32	294	BS	E		
	225/70R15C	112/110T	13786	8	65	2,469	2,337	1,120	1,060	6.5	6.0-7.0	228	9.0	697	27.4	9.1	11.5/32	314	BS	E		
	215/70R15C	109/107T	13785	8	65	2,271	2,149	1,030	975	6.5	5.5-7.0	221	8.7	683	26.9	10.0	12.6/32	308	BS	E		
	215/70R15C	109S	14165	8	65	2,271	2,150	1,030	975	6.5	5.5-7.0	221	8.7	683	26.9	9.8	12.0/32	308	BS	E		FIAT DUCATO
	205/70R15C	106/104T	13784	8	65	2,094	1,984	950	900	6.0	5.5-6.5	209	8.2	669	26.3	9.1	11.5/32	303	BS	E		
	195/70R15C	104/102T	13782	8	65	1,984	1,874	900	850	6.0	5.0-6.0	201	7.9	655	25.8	9.1	11.5/32	297	BS	E		
	205/75R15C	110/108R	14733	8	69	2,337	2,205	1,060	1,000	5.5	5.5-6.5	203	8.0	689	27.1	9.1	11.5/32	314	BS	E		
	195/80R15LT	107/105L	13814	8	65	2,150	2,039	975	925	5.5	5.0-6.0	196	7.7	693	27.3	9.1	11.5/32	312	BS	E		
	195R15C	106/104R	14506	8	65	2,095	1,985	950	900	5.5	5.0-6.0	198	7.8	690	27.2	9.6	12.1/32	314	BS	E		
	195R15C	106/104R	13283	8	65	2,095	1,985	950	900	5.5	5.0-6.5	198	7.8	691	27.2	9.6	12.0/32	311	BS	E		HYUNDAI PORTER
14 inch	185R15C	103/102R	13813	8	65	1,929	1,874	875	850	5.0	5.0-6.0	188	7.4	674	26.5	8.7	11.0/32	305	BS	E		
	175/65R14C	90/88T	13789	6	54	1,323	1,235	600	560	5.0	5.0-5.5	177	7.0	584	23.0	8.7	11.0/32	267	BS	E		
	175/70R14C	95/93T	13809	6	54	1,521	1,433	690	650	5.0	4.5-5.5	177	7.0	602	23.7	8.3	10.5/32	274	BS	E		
	165/70R14C	89/87R	13788	6	54	1,279	1,202	580	545	5.0	4.5-5.0	170	6.7	588	23.1	7.9	10.0/32	268	BS	E		
	215/75R14C	112/110T	13808	8	69	2,469	2,337	1,120	1,060	6.0	5.5-7.0	216	8.5	678	26.7	8.7	11.0/32	303	BS	E		
	205/75R14C	109/107R	14731	8	69	2,271	2,149	1,030	975	5.5	5.5-6.5	203	8.0	664	26.1	8.7	11.0/32	301	BS	E		
	185/75R14C	102/100Q	13810	8	69	1,874	1,764	850	800	5.0	5.0-6.0	184	7.2	634	25.0	8.3	10.5/32	286	BS	E		
	205R14C	109/107T	13807	8	65	2,271	2,150	1,030	975	5.5	5.5-6.5	208	8.2	686	27.0	8.7	11.0/32	307	BS	E		
	195R14C	106/104R	13780	8	65	2,094	1,984	950	900	5.5	5.0-6.0	198	7.8	666	26.2	8.7	11.0/32	299	BS	E		
	195/R14C	106/104R	14504	8	65	2,094	1,984	950	900	5.5	5.0-6.0	198	7.8	666	26.2	8.7	11.0/32	302	BS	E		
13 inch	195/R14C	102/100R	14505	6	54	1,874	1,764	850	800	5.5	5.0-6.0	198	7.8	666	26.2	8.7	11.0/32	302	BS	E		
	185R14C	102/100T	13781	8	65	1,874	1,764	850	800	5.0	5.0-6.0	188	7.4	650	25.6	8.3	10.5/32	293	BS	E		
	185/R14C	99/97P	14503	6	54	1,709	1,609	775	730	5.5	5.0-6.0	188	7.4	650	25.6	8.3	10.5/32	295	BS	E		
	165/70R13C	88/86R	13787	6	54	1,235	1,168	560	530	5.0	4.5-5.0	170	6.7	562	22.1	7.9	10.0/32	255	BS	E		
	165R13C	91/89R	13806	6	54	1,356	1,279	615	580	4.5	4.0-5.0	167	6.6	596	23.5	7.9	10.0/32	269	BS	E		
	155R13C	85/83R	13779	6	51	1,135	1,074	515	487	4.5	4.0-5.0	157	6.2	578	22.8	7.9	10.0/32	262	BS	E		
	145/R13C	91/89R	14732	10	80	1,356	1,279	615	580	4.0	3.5-4.5, 4.5JK, 4.5K	147	5.8	566	22.3	7.9	10.0/32	259	BS	E		

These data can be changed by the manufacturer without prior notice, and differentiated by regions.

Original Equipment



Driving Tomorrow

# ROADIAN CT8

High Durability and long mileage for vans



**NEXEN TIRE** www.nexentire.com

Sales Headquarter 3-4FL. NEXEN BLDG. 796-27 BANGBAE-DONG, SEOCHO-GU, SEOUL, KOREA ZIP CODE: 137-060 TEL. 82-2-3476-2782 FAX. 82-2-3476-2205-6

**NEXEN TIRE**



# Economical tire

## with improved fuel efficiency and durability

### ROADIAN CT8 KEY PERFORMANCE

01

**Durability & Long Mileage**

02

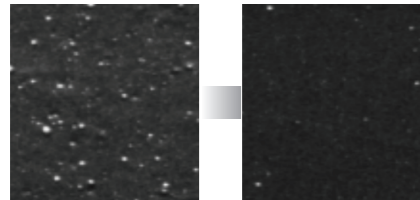
**Fuel efficiency**

03

**Handling & Braking**

#### 01. Durability & Long Mileage

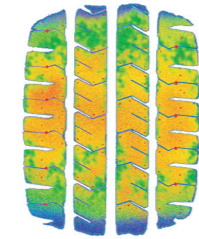
##### New compound to reduce energy loss



No dispersion      Optimized dispersion

Compound with excellent wear-resistance

Optimized dispersion of compound improves wear-resistance and reduces energy loss, which results in longer tread life.



SQUARE TYPE variation required

Excellent even grip force leads to longer tread life.

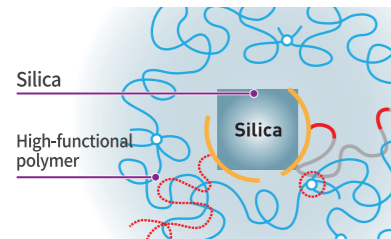


Sidewall protection from curb damage

4 side-wall shields provide outstanding resistance to damage such as external impacts and curb stones.

#### 02. Fuel efficiency

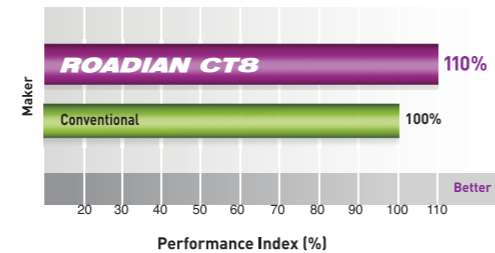
##### New compound to reduce energy loss



Silica      High-functional polymer      Silica

Improved fuel efficiency with decreased rolling resistance, thanks to the use of optimal compound

##### Fuel efficiency

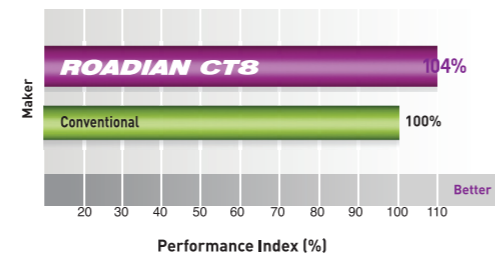


#### 03. Handling & Braking



Improved handling performance and excellent wet grip resulting in a 4% increase in braking performance over earlier models

##### Braking Performance



# ROADIAN CT8



### Pattern Design & Construction

#### Rib Type Shoulder Construction

Maximizes strength through a Rib Type construction on the shoulder block to endure higher loads.



#### Straight Groove

Improved hydro performance enables better drainage against existing zigzag pattern.



#### Endless, High Strength Cap Ply

Newly adopted optimized carcass contour system (OCCS) offers greater robustness by minimizing tire deformation during high speed driving.

OCCS Optimized Carcass Contour System

#### High Tensile Steel Belts

Groove skid depth optimization design delivers enhanced stud performance (prevents ice and pin separation).

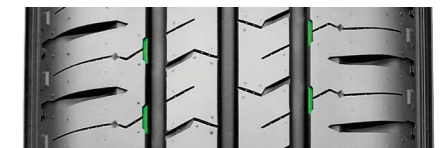
#### Square Dimple

Dispersion of Block stress by applying Square Dimple for improved durability.



#### Bite Edge

Improves Traction by applying the "Bite Edge" on the groove.



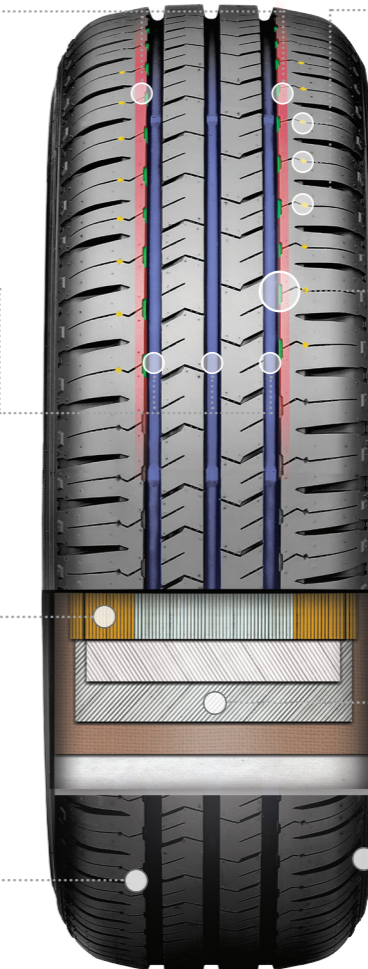
#### Shock-Absorbing Sidewall

Enhanced braking function with OBSC technology for optimized grip pressure and stress dispersion.

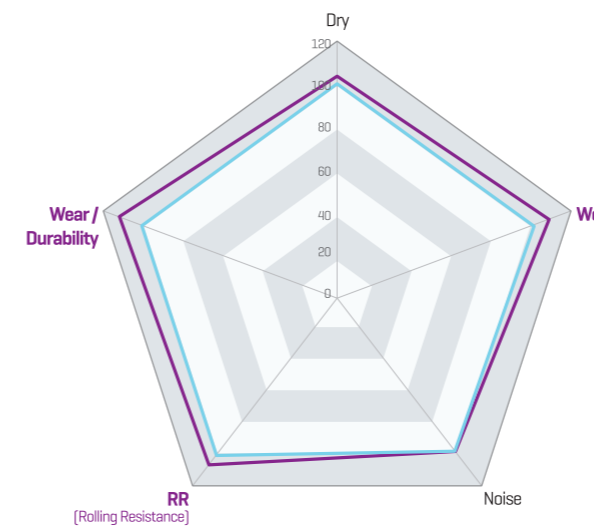
OBSC Optimized Best Contour System

#### High Modulus Carcass

Better driving stability and greater robustness achieved with a new protector that prevents damage to sides in bumpy road conditions.



### Target Performance Radar Chart



#### ROADIAN CT8

- Enhanced durability & longer tread life
- Improved fuel efficiency with decreased rolling resistance
- Excellent handling and braking performance on wet roads

ROADIAN CT8  
CONVENTIONAL

**NEXEN TIRE**